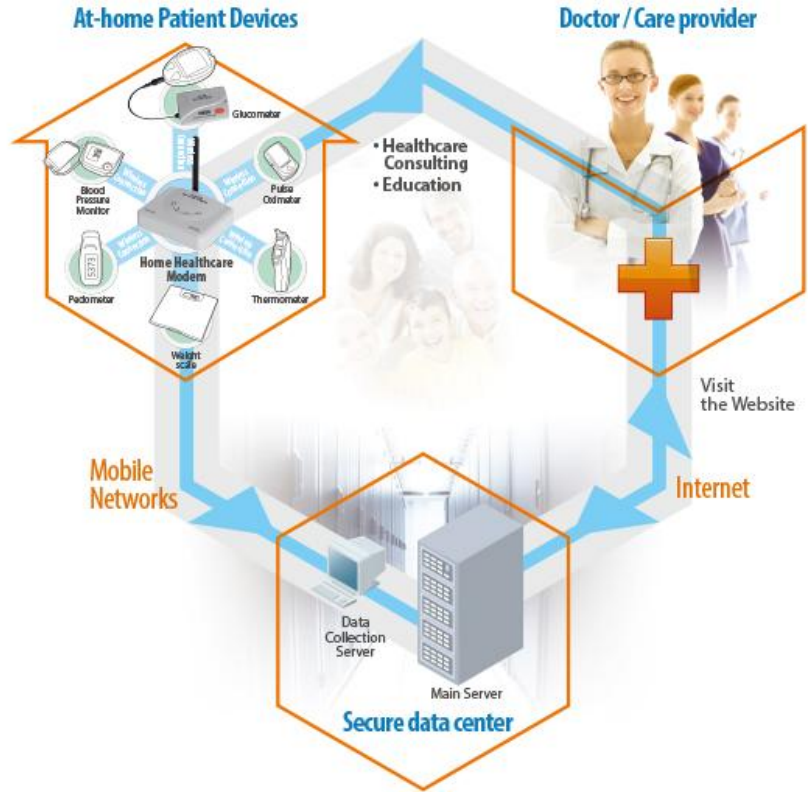


Tele-Healthcare Solution

Overview

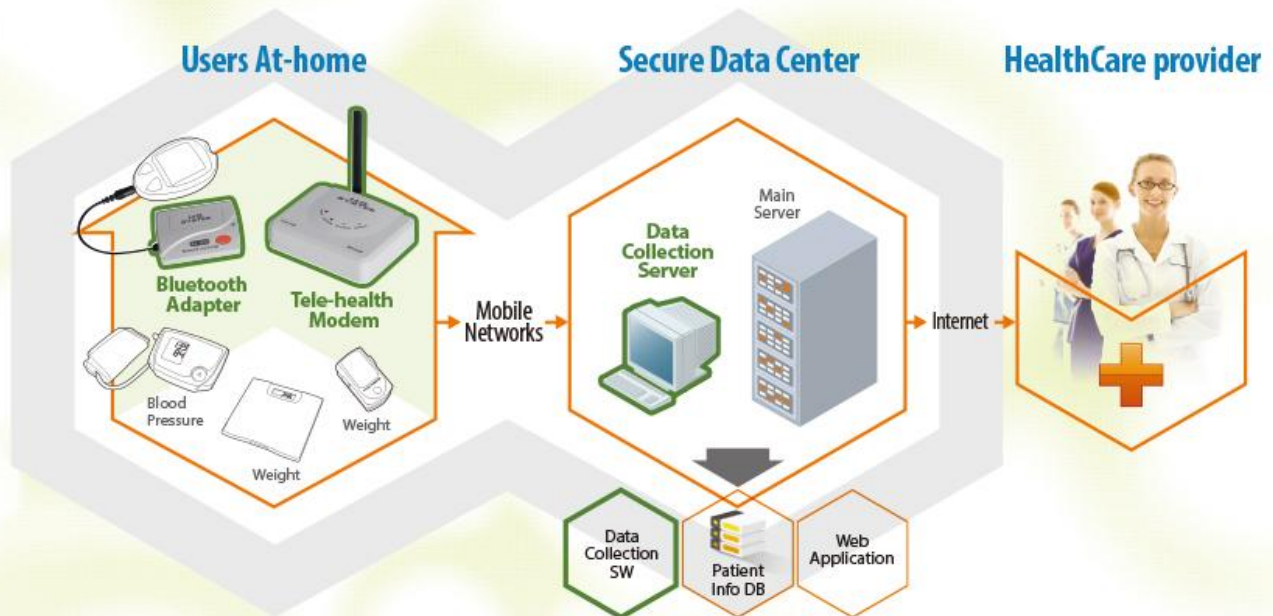
H3 System provides high quality, cost effective tele-healthcare solutions.



Competitive Advantages

<i>Easy to use</i>	<ul style="list-style-type: none"> • Measure blood glucose, blood pressure, weight and other medical data as usual. • Data transmission is fully automatic. • Installation is very easy as well.
<i>No additional equipment needed</i>	<ul style="list-style-type: none"> • You don't have to have a PC. • You can use a phone line, an Internet line, or mobile networks. • All you need is electric power.
<i>Multi-device compatibility</i>	<ul style="list-style-type: none"> • Glucometer, blood pressure monitor, weight scale, heart rate monitor, thermometer, pulse oximeter and inhaler. • Additional devices in development.
<i>Cost effective and reliable</i>	<ul style="list-style-type: none"> • Broad price spectrum and cost effective tele-healthcare solution. • Over 10,000 worldwide users. • Commercialized in Korea and US, and the other countries.

System Configuration



* Interface customization available on request (MOQ applicable)

- Tele-health Modem :

- Receives health data from measuring devices such as blood pressure monitor, glucometer and weight scale
- Transmits them into a healthcare center through mobile networks

- Bluetooth Adapter :

- Receives data from glucometer
- Sends the data to other devices such as a mobile phone, a gateway and so on

- Data Collection Software :

- Receives data from Tele-health Modems
- Integrates information into database, generates XML files, or sends XML files over Web service
- Generates communication logs
- Sends new configurations to Tele-health Modems

Tele-Health Modem

Overview

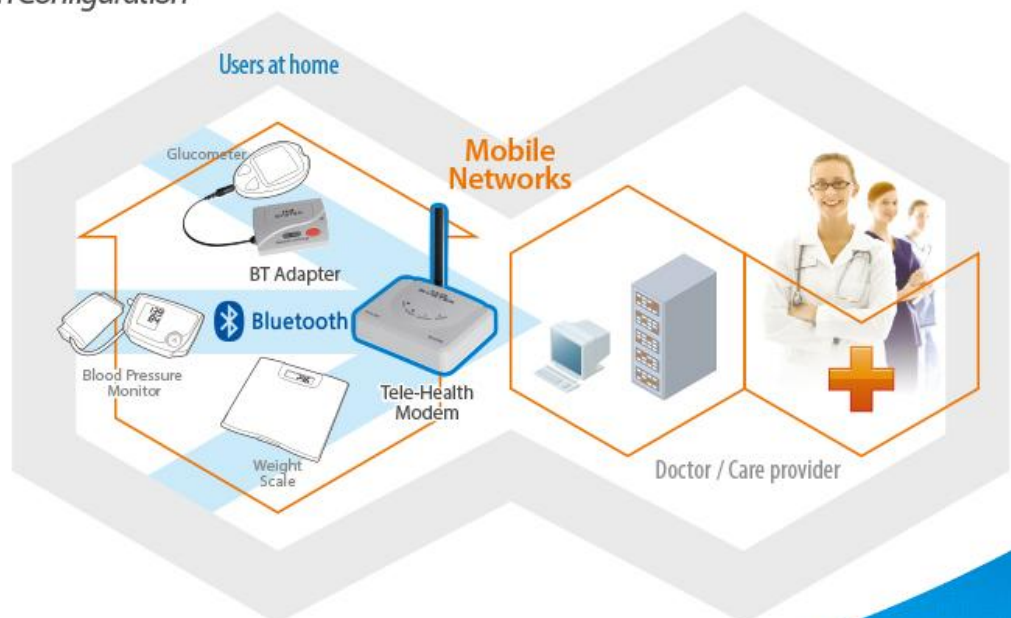
- Functions

- Receives health data from measuring devices such as blood pressure monitor, glucometer and weight scale
- Transmits them into a healthcare center through Mobile networks





- Features

- Automatic transmission of measured health records
- Device time setting
- Alive signal
- Backup battery
- Remote Firmware Upgrade (Except H3G-700)
- Remote Pairing (Except H3G-700)

- System Configuration



Specifications

	H3G-700	H3G-800	H3G-900	H3G-1000
Image				
Demension and power supply	<ul style="list-style-type: none"> • Size : 125 x 100 x 33mm (Not including antenna) • Weight : 160g (Not including adapter) • AC Adapter (5V/3A) • Backup battery (Rechargeable Lithium Polymer) 			
Remote firmware upgrade	N/A	Supported	Supported	Supported
Remote Pairing	N/A	Supported	Supported	Supported
Device Interface	Bluetooth Classic	Bluetooth Classic	Bluetooth Classic / Low Energy	Bluetooth Low Energy
Communication Networks	Mobile (GSM/GPRS)	Mobile (3G, Verizon)	Mobile (LTE, Verizon)	Mobile (2G or LTE)

Applicable Devices

Glucometer	Johnson & Johnson (USA) Bayer (Germany) Abbott (USA) Nipro (USA) Roche (Switzerland)	Blood Pressure Monitor	A&D Medical (Japan) Omron (Japan) Welch Allyn (USA)
Pulse Oximeter	Nonin (USA) Beijing Choice (China)	Weight Scale	A&D Medical (Japan) Omron (Japan) Welch Allyn (USA)
Inhalar	Propeller (USA) Nexus6 (New Zealand)	Thermometer	A&D Medical (Japan) ForaCare (Taiwan)
Pedometer	P1NG (Taiwan)	Peak Flow Meter	Lung Monitor (UK)

*BLE Standard profiles compliant

Bluetooth Adapter

Overview

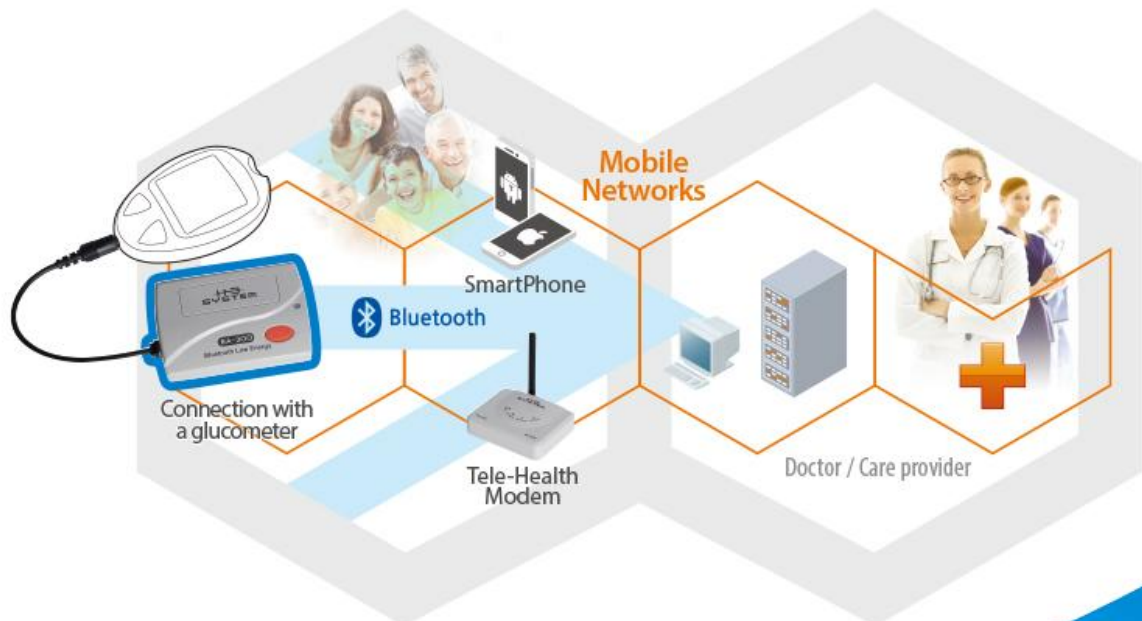
- Functions

- Receives data from a glucometer
- Sends the data to other devices such as a mobile phone, a gateway and so on
- Empowers a glucometer with cable connection only to send data via wireless communication (From Serial to Bluetooth)




- Features

- Easy to use (Just take a reading)
- Suitable size to carry
- Long battery life (6 months)
- Connectivity to Android and iPhone

- System Configuration



Specifications

	BA-110	BA-300	BA-400
Images			
Demension and power supply	<ul style="list-style-type: none"> • Size : 70 x 47 x 16mm • Weight : 30g (Not including dry cells) • Power supply : Dry cells (AAA Size) 2EA 		
Device Interface	Bluetooth Classic	Bluetooth Low Energy	Bluetooth Low Energy
Models	<ul style="list-style-type: none"> • BA-110 (J&J) • BA-110 (Bayer) • BA-110 (Abbott) • BA-110 (Nipro) • BA-110 (Roche (IR)) 	<ul style="list-style-type: none"> • BA-300 (J&J, Bayer) • BA-3000 (Nipro) • BA-300 (Abbott) 	<ul style="list-style-type: none"> • All-In-One (J&J, Bayer, Nipro, Abbott, Roche (IR))

Supported glucometer models

Johnson and Johnson	OneTouch Ultra OneTouch Ultra2 OneTouch Easy/Mini	Bayer	Contour Contour next EZ Contour XT Contour TS
Abbott	Freestyle FreeStyle Lite FreeStyle Freedom Lite	Nipro	TRUE Track TRUE Balance TRUE Result TRUE Metrix
Roche	Aviva Aviva plus		

* Sample codes (Android and iOS) for developer are available

